

Breeds of Cattle

Source: Page 11 of the Welcome to World Dairy Expo Guide

Match the colored pictures of the breeds to the correct descriptions. Note: the Holstein will have two pictures. Students can also write a short story about one of the breeds.

Holstein

Originating in The Netherlands and Northern Germany, they are the largest dairy cows in size, weighing approximately 1400 pounds. They give an average of 6.4 gallons or 55 pound of milk per day. Holsteins are primarily black and white, but sometimes red and white in color (Referred to as Red & Whites).

Jersey

They weigh about 900 pounds. They mature earlier than other breeds and are honey-brown in color, ranging from light to dark, occasionally having white spots. Their milk is rich and creamy and they give about 4.5 gallons or 39 pounds of milk per day. They originated from the British Channel Island of Jersey.

Guernsey

Guernsey cows are an orange-red breed often having white legs and white areas on the body (cream-and-brown breed). They weigh about 1100 pounds. They are noted for their rich golden milk due to carotene or Vitamin A, as part of their diet. This breed is from the Isle of Guernsey in the English Channel. They give about 4.6 gallons or 39 pound of milk per day.

Brown Swiss

Brown Swiss cows vary in color from silver to dark brown. They are known for their strength and ruggedness and weigh about 1300 pounds. Their milk is excellent for cheese production and they give about 5.3 gallons or 46 pounds of milk per day. They come from the slopes of the Alps of Switzerland as the name implies.

Ayrshire

Ayrshire cows are a rusty-red and white. They weigh about 1200 pounds. They originated from the County of Ayr in Scotland and were known as the "aristocrat of dairy breeds" due mainly to their large size. They yield about 5 gallons or 43 pounds of milk per day.

Milking Shorthorn

Originated in Britain in the valley of the Tees River, Milking Shorthorn are an averaged sized breed. They weigh about 1300 pounds. Their coloring is all red, red with white markings, all white or roan. And they produce about 4.8 gallons or 41 pounds of milk per day. The Milking Shorthorn was not even declared a dairy breed until 1969.

To learn more about the breeds, you can visit the breed websites at:

<http://www.ansi.okstate.edu/breeds/cattle/>

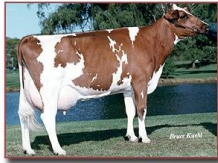
www.usguernsey.com

www.usayrshire.com

www.holsteinusa.com

www.brownswissusa.com

www.milkingshorthorn.com



provided by Hoard's Dairyman

