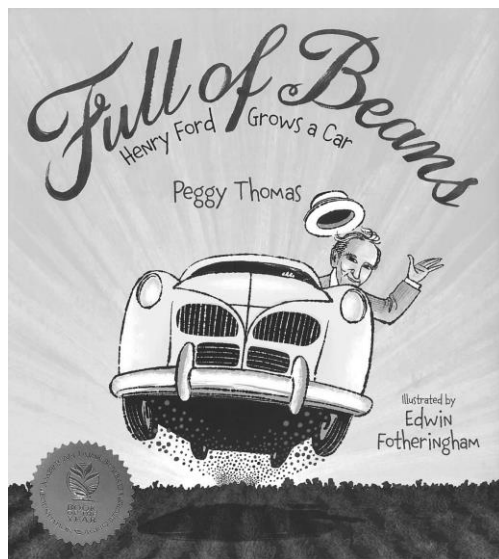


## Wisconsin Ag in the Classroom

### Essay Contest 2020-2021 Volunteer Handbook

Informational flyer	Pages 2-3
Promoting the contest & when you receive essays	Pages 4-5
Contest deadlines and rules	Page 6
County Report Form	Page 7
District Report Form	Page 8
WFBF P & E Committee Info	Page 9
Sponsor information	Page 10



[www.wisagclassroom.org](http://www.wisagclassroom.org)



## 2020-2021 Essay Contest for 4<sup>th</sup> and 5<sup>th</sup> Grade Students Presented by Wisconsin Farm Bureau's Ag in the Classroom

How have Wisconsin soybean farmers fueled Wisconsin's economy?

This year's essay contest topic is "How have Wisconsin soybean farmers fueled Wisconsin's economy?" Our 2021 Book of the Year is "**Full of Beans- Henry Ford Grows a Car**" by Peggy Thomas. The book and essay topic allow students to explore how soybeans can be used in so many ways including food, animal feed, energy, cars and much more! The book shares how Henry Ford used soybeans not only in cars, but in his clothes, and food. All rules, promotional materials, county Farm Bureau essay contest coordinator's info, lessons and activities, and other resources related to the essay contest and book program can be found at [www.wisagclassroom.org](http://www.wisagclassroom.org). Books must be ordered online through the website store.

### Contest Rules:

- The essay contest is open to 4<sup>th</sup> and 5<sup>th</sup> grade students in public schools, private schools, and home school programs. Students involved in 4-H, PALS and after school programs are also encouraged to participate.
- Essays must be handwritten in ink **or** be computer generated. They must be single-sided and fit on one sheet of paper.
- The essay must be between 100 to 300 words in length.
- Essays will be judged on content (50 points), grammar and spelling (25 points) and originality and creativity (25 points).
- Essays must include: student's name, grade level, parent's name, teacher's name, school name and address, school phone number, teacher's email address and county on the back of the essay. Please do not identify the student on the front side.
- **Entry deadline - Postmarked by April 1, 2021** and sent to the county essay coordinator:

**County Farm Bureau Essay Contest  
Coordinator:**

To find the address of your county Farm Bureau essay contest coordinator, visit [wisagclassroom.org](http://wisagclassroom.org) and look under the essay contest information.

### Contest Prizes:

- Nine district winners will be chosen. District and state winners will be announced in May 2021.
- Each district winner will receive a classroom presentation in May 2021 for their class, homeroom or home school group.
- A state winner will be chosen and will receive a special award.

*The Agriculture in the Classroom essay contest is sponsored by We Energies, Wisconsin Soybean Marketing Board, Wisconsin Soybean Association, and the Wisconsin Farm Bureau Foundation – Ag in the Classroom.*



Return this form with essay **or** provide the same information on the back of each entry:

Student's name \_\_\_\_\_

Grade level \_\_\_\_\_

Parent's name (mom and dad) \_\_\_\_\_

Teacher's name \_\_\_\_\_

School name \_\_\_\_\_

School address \_\_\_\_\_

City \_\_\_\_\_ Zip \_\_\_\_\_

Teacher's email \_\_\_\_\_

School phone number \_\_\_\_\_

County \_\_\_\_\_

You can use the 2021 Book of the Year "**Full of Beans**" for ideas and perspectives you could cover. But that is not a requirement! Including poetry, as the book does, might be a fun way is acceptable but not required.

Because of the broad nature of this topic, students might consider, **but are not limited to**, some of these sub-topics as they write their essay:

- How are Wisconsin soybeans grown, harvested, processed and marketed?
- What products do many citizens use that are made of soybeans?
- How are soybeans used in fuel production?
- What kind of economic impact do soybeans have in Wisconsin?

**Use your imagination and creativity to think of other items to write about!**

-----  
Want to learn more about science and soybeans? Use one of our Soybean Science Kits sponsored by the Wisconsin Soybean Marketing Association!

Learn more at

<https://www.wisagclassroom.org/lessons-resources/classroom-lessons/soybean-science-kits/>

### **On the Web**

National Ag in the Classroom matrix- search for soybean, sustainability, and other lessons!

<https://www.agclassroom.org/teacher/matrix/>

<https://www.agclassroom.org/teacher/matrix/lessonplan.cfm?lpid=740>

National Ag in the Classroom Student Center-

<https://www.agclassroom.org/student/index.cfm>

American Farm Bureau Foundation for Agriculture- free lessons, My American Farm resources, and links to other resources. <https://www.agfoundation.org/free-resources/>

Wisconsin Soybean Resources- Links to learn about soybeans in our state! <https://coolbean.info/>, <https://wisoybean.org/>, <https://badgerbean.com/>,

Into the Outdoors- Soybean Farming- <https://intotheoutdoors.org/topics/soybean-farming/>

Driving STEM-Super Soybean Car YouTube Workshop- From the National Ag in the Classroom, American Farm Bureau Foundation for Agriculture, and Ford Motor Company- <https://youtu.be/SWECSoeqqHo>

Ford Motor Company Resources- Sustainability- <https://corporate.ford.com/microsites/sustainability-report-2020/sustainability-strategy.html> **The Henry Ford**- <https://www.thehenryford.org/education/>

### **How to help students determine what to write:**

- Discuss how agriculture impacts them using the sub-points in the box above. Students are NOT limited to the sub-points- these are just ideas to get them starting thinking!
- Using lessons from National Ag in the Classroom, Wisconsin Ag in the Classroom, and other sources to learn more about agriculture in their area.
- **Questions?** Contact Wisconsin AITC at 608-828-5644, email [darneson@wbf.com](mailto:darneson@wbf.com), [wisagclassroom.org](http://wisagclassroom.org).



## Promoting the Essay Contest- 2020-2021

*“How have Wisconsin soybean farmers fueled Wisconsin’s economy?”*

The following ideas are suggestions for promoting the essay contest in your county.

1. Have a meeting of the Farm Bureau Ag in the Classroom, YFA’s and County FB Promotion and Education committee to discuss your county’s plan for promoting and handling the contest. Include any other people that could be helpful (i.e. FFA Advisors, 4-H leaders, home school contacts). Does your county offer any incentives or prizes for participants? Discuss how and when you’ll judge the entries, follow-up to the schools and other details.
2. Essay topic lessons and resources on the website: Use the lessons that accompanied the book *Full of Beans- Henry Ford Grows a Car* or the other lessons under the Essay Contest section.
3. Does your county have a database or list of teachers you work with? If not, contact the schools in your county and find out which schools have 4-5<sup>th</sup> grade classes. You can get a list of schools from the DPI website’s school directory (<http://dpi.wi.gov/directories.html>).
4. Personal contact is the best but it’s **COVID-19!** Precautions will need to be taken if schools are meeting in-person. Many won’t allow visitors to the classrooms. So consider some social media and virtual options. An in-service call for your teachers and volunteer to discuss the contest, topic, resources you can help with, timelines, and prizes. This will also allow teachers to give you feedback. Taped presentations can be helpful. Visit a few soybean farms and do some interviews with the farmers. Share some of the online videos.
5. Many schools are changing their policies about distributing information. A good committee task is to contact schools you haven’t had success with and ask what their rules are for distributing contest information. You may have to clear the essay contest flyer with an administration staff member first and provide enough copies for all students. Sometimes it needs to have the principal or curriculum coordinators approval.
6. Can you offer resource packets that can be sent home with the students? It might include a Soybean Ag Mag, supplies to make a Beanie Baby or Soy Plastic, some information about soybeans in your county and state, and other resources.
7. Follow-up is important. Checking in with the schools periodically during the school year will help keep the essay contest fresh in the teacher’s minds. A reminder email, mailing or phone call a few weeks before the deadline is also a good reminder and you can verify where the

essays should be sent to. You can offer a classroom presentation or other assistance if they need it. Clarifying where the essays can be sent is important. You might even want to provide an envelope with the correct address information for the schools.

8. Utilize Soybean Science Kits that are in your county or area. If you aren't able to go to the schools, perhaps you can video some of the lessons and share them. Offering some background information as you do the videos would be helpful to. You could also do them as a Facebook Live presentation.
9. Consider an incentive for the teachers that have students entering the contest. Perhaps offering them a package of Ag Mags, a choice of one of the Children's Books, some of the American Farm Bureau Foundation products ([www.agfoundation.org](http://www.agfoundation.org)) or other resource might entice them to have students complete the essays.
10. Use the social media posts and press releases in your local newspapers for promoting the contest. We are getting more home school families using AITC resources, 4-H clubs (after school programs), and others that see our opportunities. You can modify the press release to fit your local communities and put in your county information.
11. Contact your local agriculture education and FFA advisors. Perhaps their students can help promote the contest through their Food for America activities. The FFA also has an Agriculture Education Proficiency area so your local school may have some students that have an interest in working with elementary classes and could assist you in promoting the contest.
12. Don't get discouraged! Teachers get numerous requests for various contests and activities. Work with the teachers to see how this contest can best fit into their curriculum.

### **When you receive essays....**

**Please follow-up with the schools or students that enter and let them know you received the essays!**

Also

- Let them know when you will be judging them and how they will find out who the winners are.
- Thank them for their participation and encourage 4<sup>th</sup> graders to watch for next year's contest.
- Inform them of any other information they should know about your county's essay contest program!

**Thank you- the teachers, parents and students will truly appreciate your follow up!**

## **2020-2021 Essay Contest Deadlines**

These are **postmarked by dates!**

**April 1-** Essays due to county Farm Bureau essay coordinators

**April 15-** County Winners due to District Promotion and Education Chair with a report on how many essays you received!

**April 26-** District Winners due to Wisconsin Ag in the Classroom from the WFBF Promotion and Education Committee

**May 3-** State Winner Selection Packet (copies of the nine district winners and ballot) sent to WFBF Promotion and Education Committee

**May 10-** Ballots must be returned to Wisconsin Ag in the Classroom

**May to end of school year-** District Winner Presentations by Wisconsin Ag in the Classroom, sponsors and county leadership.

### **Contest Rules**

#### **Contest Rules:**

- The essay contest is open to 4<sup>th</sup> and 5<sup>th</sup> grade students in public schools, private schools, and home school programs. Students involved in 4-H, PALS and after school programs are also encouraged to participate.
- Essays must be handwritten in ink **or** be computer generated. They must be single-sided and fit on one sheet of paper.
- The essay must be between 100 to 300 words in length.
- Essays will be judged on content (50 points), grammar and spelling (25 points) and originality and creativity (25 points).
- Essays must include: student's name, grade level, parent's name, teacher's name, school name and address, school phone number, teacher's email address and county on the back of the essay. Please do not identify the student on the front side.
- **Entry deadline - Postmarked by April 1, 2021**



## 2020-2021 County Essay Report Form

COUNTY \_\_\_\_\_ CHAIRPERSON \_\_\_\_\_

# ENTRIES \_\_\_\_\_

Please return this form along with your winning County Essay by April 15 to your Promotion and Education Chairperson.

Make a copy of the winning essay for your records – essays may not be returned to you from the District or State.

## **2020 Wisconsin Farm Bureau Promotion and Education Committee**

Not sure what District you are in? Visit <https://wfbf.com/about/counties/>

P & E Committee phone numbers can be found at: <https://wfbf.com/programs/promotion-and-education/meet-the-committee/>

### **District 1**

Jacki Moegenburg  
4860 Country Aire Dr.  
Cedarburg, WI 53012

### **District 2**

Andrea Brossard  
W7122 Redwood Road  
Burnett, WI 53922

### **District 3**

Krista Klinkner  
S4993 Volden Ln  
Genoa, WI 54632

### **District 4**

Darby Sampson  
N2906 Selmer Rd  
Melrose, WI 54642

### **District 5**

Lynn Leahy  
3750 Cleveland Avenue  
Plover, WI 54467

### **District 6**

Kathy Duescher  
3848 Anston Rd.  
Green Bay, WI 54313

### **District 7**

Brittney Muenster  
N5084 French Rd  
Seymour, WI 54165

### **District 8**

Katie Zoromski  
P.O. Box 412  
Marathon, WI 54448

### **District 9**

Kay Gilbertson  
E9901 560<sup>th</sup> Ave.  
Elk Mound, WI 54739





# Thank you to our sponsors!



## We Energies

[www.weenergies.com](http://www.weenergies.com)

We provide electric service to customers in portions of Wisconsin and Michigan's Upper Peninsula. We also serve natural gas customers in Wisconsin and steam customers in downtown Milwaukee. We Energies is the trade name of Wisconsin Electric Power Co. and Wisconsin Gas LLC, principal utility subsidiaries of Wisconsin Energy Corporation.

Jason Kollwelter, We Energies, 1300 Janesville Avenue, Fort Atkinson, WI 53538

---

## Wisconsin Soybean Association and Wisconsin Soybean Marketing Board

<https://badgerbean.com/>

<https://wisoybean.org/>

Providing essential and informative research-based content, stories and data for Wisconsin soybean farmers. Wisconsin Soybean Marketing Board (WSMB) is a grassroots, farmer-led organization leading efforts in soybean research, in the expansion of soybean market opportunities, and as an information resource to producers and the public.

Robert Karls, Wisconsin Soybean Marketing Board, 4414 Regent Street, Madison, WI 53705



The [Wisconsin Farm Bureau \(WFB\) Foundation](#) is a nonprofit 501(c)3 tax deductible entity to support agricultural education and leadership programs. The WFB Foundation funds a variety of agricultural education and leadership programs including Ag in the Classroom.